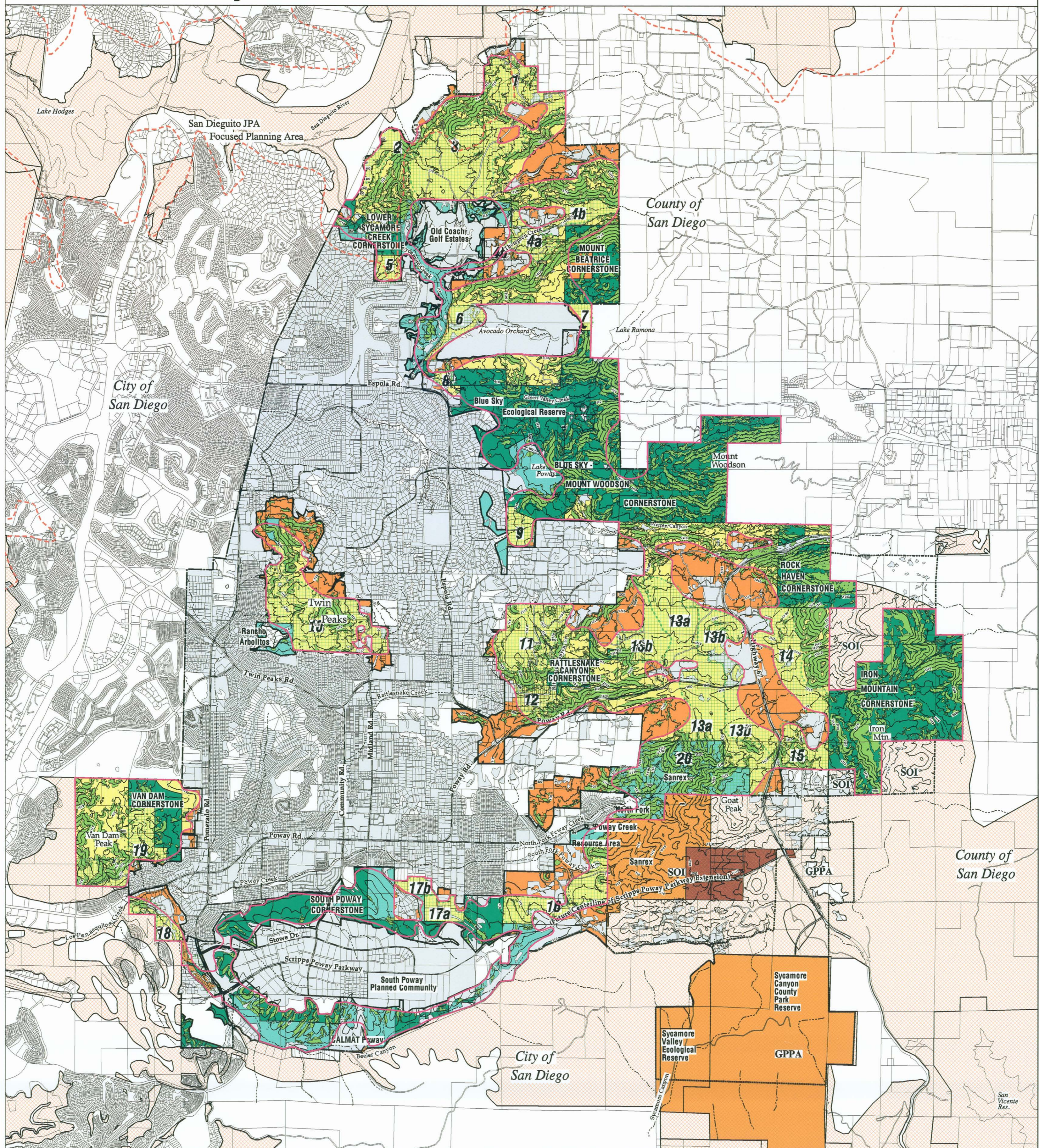


Poway Subarea Habitat Conservation Plan/NCCP



MAP 3: PRESERVE DESIGN

- | | | |
|--|--|--|
| Cornerstone Lands (95% to 100% preserved) | Offsite Scripps Poway Pky. Mitigation Parcels | Mitigation Area Boundary |
| Other Publicly or Privately Owned Open Space (80% to 100% preserved) | Disturbed and Developed Habitat | San Diego JPA Boundary |
| 45%+ Slopes (100% preserved) | Proposed Resource Protection Areas (PRPA) Showing ID Numbers | Biological Core and Linkage Area (BCLA) |
| Open Space Outside FPA Boundary | Draft MSCP Multi-Habitat Planning Area | Rural Residential within BCLA (80% preserved) |
| | | Habitat Inside RCA, Outside BCLA (50% Preserved) |

Base Map Legend

- City of Poway Boundary
- Sphere-of-Influence (SOI)
- Major Roads
- Parcel Lines*
- Poway General Plan Planning Area (GPPA)

RUBS DISCLAIMER: Every reasonable effort has been made to assure the accuracy of this map. However, neither the RUBS participants nor San Diego State Planning Corporation assume any liability, express or implied, for any use of this map. THIS MAP IS PROVIDED WITHOUT WARRANTY OF ANY KIND, EITHER EXPRESS OR IMPLIED, INCLUDING, BUT NOT LIMITED TO, THE IMPLIED WARRANTIES OF MERCHANTABILITY AND FITNESS FOR A PARTICULAR PURPOSE.

RUBS PROPRIETARY INFORMATION: The use of this information is restricted to the agreement only. Any reuse or retransmission of this information is prohibited, except in accordance with each subcontracting agreement.

July 21, 1997 prwa_design_hp.aml

FEET

0 750 1500 3000 4500 6000

UDEN Environmental and Energy Services

40 Acres 160 Acres