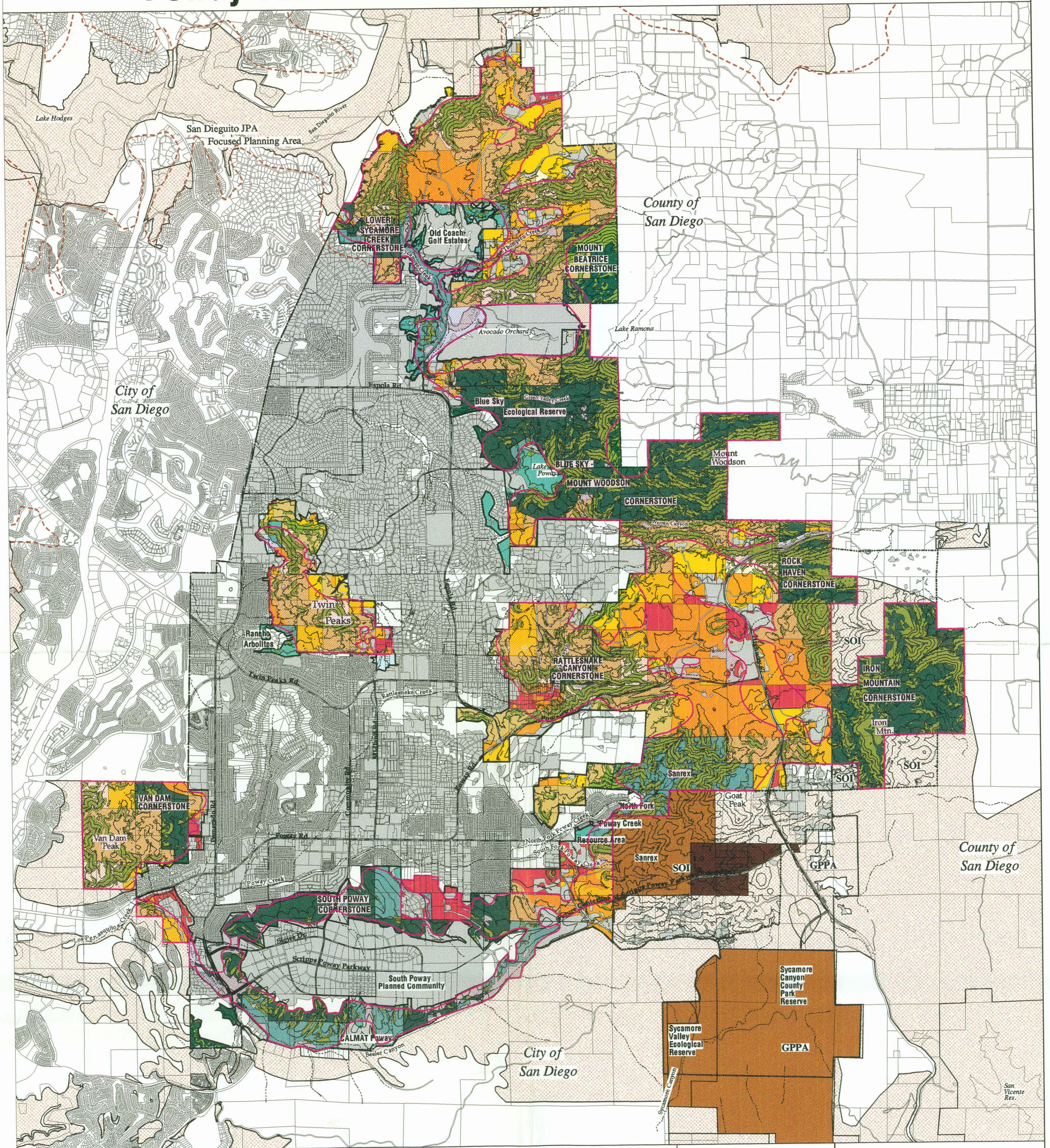


# Poway Subarea Habitat Conservation Plan/NCCP



## MAP 2: MINIMAL PARTICIPATION PRESERVE ANALYSIS

Projected Level of Preservation Under Existing Development Regulations Applied to Private Property  
Assuming City Water Extension to all Rural Residential Areas

- |   |   |  |
|---|---|--|
| <ul style="list-style-type: none"> <li><span style="display: inline-block; width: 15px; height: 10px; background-color: #006400; border: 1px solid black;"></span> Cornerstone Lands (95% to 100% preserved)</li> <li><span style="display: inline-block; width: 15px; height: 10px; background-color: #008080; border: 1px solid black;"></span> Other Publicly or Privately Owned Open Space (80% to 100% preserved)</li> <li><span style="display: inline-block; width: 15px; height: 10px; background-color: #90EE90; border: 1px solid black;"></span> 45%+ Slopes (100% preserved)</li> <li><span style="display: inline-block; width: 15px; height: 10px; background-color: #ADD8E6; border: 1px solid black;"></span> Other Parcels within Mitigation Area Boundary</li> <li><span style="display: inline-block; width: 15px; height: 10px; background-color: #8B4513; border: 1px solid black;"></span> Open Space Outside Mitigation Area Boundary</li> </ul> | <p>Projected Preservation At Buildout (Zones RR-A, RR-B, and RR-C)</p> <ul style="list-style-type: none"> <li><span style="display: inline-block; width: 15px; height: 10px; background-color: #FFFFE0; border: 1px solid black;"></span> 95 - 100%</li> <li><span style="display: inline-block; width: 15px; height: 10px; background-color: #FFD700; border: 1px solid black;"></span> 90 - 95%</li> <li><span style="display: inline-block; width: 15px; height: 10px; background-color: #FFA500; border: 1px solid black;"></span> 80 - 90%</li> <li><span style="display: inline-block; width: 15px; height: 10px; background-color: #FF8C00; border: 1px solid black;"></span> 50 - 80%</li> <li><span style="display: inline-block; width: 15px; height: 10px; background-color: #FF0000; border: 1px solid black;"></span> 0 - 50%</li> </ul> | <ul style="list-style-type: none"> <li><span style="display: inline-block; width: 15px; height: 10px; background-color: #8B4513; border: 1px solid black;"></span> Offsite Scripps Poway Pky. Mitigation Parcels</li> <li><span style="display: inline-block; width: 15px; height: 10px; background-color: #A9A9A9; border: 1px solid black;"></span> Disturbed and Developed Habitat</li> <li><span style="display: inline-block; width: 15px; height: 10px; background-color: #FFB6C1; border: 1px solid black;"></span> Biological Core and Linkage Area (BCLA)</li> <li><span style="display: inline-block; width: 15px; height: 10px; background-color: #D3D3D3; border: 1px solid black;"></span> Draft MSCP Multi-Habitat Planning Area</li> <li><span style="display: inline-block; width: 15px; height: 10px; border-top: 1px dashed black;"></span> San Dieguito JPA Boundary</li> </ul> |
|---|---|--|

### Base Map Legend

- City of Poway Boundary
- Sphere-of-Influence (SOI)
- Major Roads
- Parcel Lines \*
- Poway General Plan Planning Area (GPPA)



Environmental and Energy Services

RUIIS DISCLAIMER: Every reasonable effort has been made to ensure the accuracy of this map. However, neither the RUIIS participants nor San Diego Environmental and Energy Services assumes any liability relating to the use of this map. THIS MAP IS PROVIDED WITHOUT WARRANTY OF ANY KIND, EITHER EXPRESS OR IMPLIED, INCLUDING, BUT NOT LIMITED TO, THE IMPLIED WARRANTIES OF MERCHANTABILITY AND FITNESS FOR A PARTICULAR PURPOSE.

RUIIS PROPRIETARY INFORMATION: The use of this information is restricted to the purposes stated in the agreement only. Any reuse or misappropriation of this information is prohibited, except in accordance with such additional agreements.

July 21, 2007 pres\_analysis\_bp.aml

